

A VIOLIN BY THOMAS (III) Edlinger, Prague, ca. 1700

A rare and finely made violin by Thomas III Edlinger (1662 – 1729), made in Prague around 1700. The violin has been restored to baroque/classical condition and is in excellent playing condition.

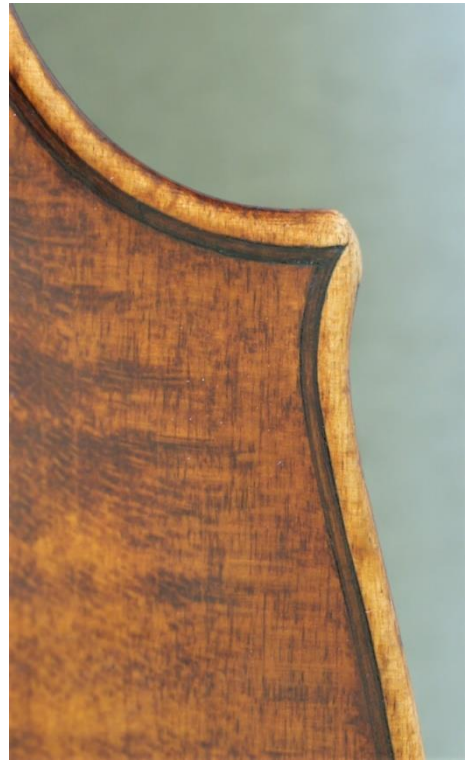
Belly of 2 matched pieces of very fine pine, the back of 2 pieces of horizontal, well figured maple, matching sides and a plain maple head and scroll. The tailpiece is mounted with a silver tailpiece mount in the Viennese style, to ensure stability and permanency of the mounting.

Genuine violins by Thomas III Edlinger are quite rare. He had an excellent reputation in his own time and worked for the Lobkowitz family of Prague and Sylvius Weiss, the great lutenist.

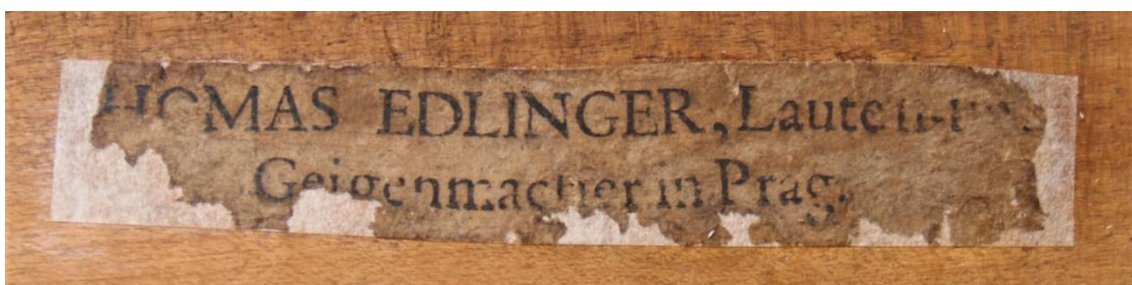
This violin has a full and resonant tone with great clarity and projection across its range. Sold with an illustrated restoration report and insurance valuation certificate.







Label after restoration



Neck – sides set into heel



Viennese style tailpiece with silver mount



Original pine liners and blocks



Former owner's label – Swedish? Alenius Ensemble?

